

Pacifier Leash



Description: The Pacifier Leash features the **BushBar**, but other knots can be used if you want to change this pattern. On one end is a suspender style clip, with a baby pacifier on the other end.

This Macrame pattern is an easy project suitable for beginners. The strap is 8 inches long.

You need a pacifier with a **handle**, and a clip designed for this type of use. In the example shown, I used Rainbow colored cotton Crochet cord.

Supplies Needed:

- 2mm cord material
- One pacifier
- One clip
- Project Board, pins and tape
- Non-toxic glue
- Measuring Tape

Knots Used in Pattern:

- [Larks Head knot](#)
- [Bush Bar](#)
- [Overhand knot](#)

Clip Attachment

Since you are folding the cords more than once, you need to cut 2 cords at least 18 x the size you want the strap to be when the Pacifier Leash is finished. So for an 8-inch band, you need 4 yards.

Prepare the ends with tape, glue or wax.



Step 1: Place the clip on your work surface **upside down**, so the back is facing up. The bar should be positioned as shown in this image.

Fold one cord in half and slide it under the attachment bar. Make sure the ends are on the left.



Step 2: Move the ends to the right, and pass them **under** the folded area of the cord, to make a Larks Head knot.

Pull the ends to tighten the knot as much as possible.



Step 3: Use one half to tie a Half Hitch, by passing it **over - under** the attachment bar.

As you pull it right, bring it **over** the cord to complete the loop.



Step 4: Repeat step 3 with the other half of the cord.

It should be placed on the opposite side of the Larks Head knot.

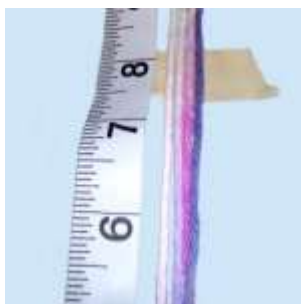


Step 5: Repeat steps 1 - 4 with the other cord, placing it beside the first.

Turn the clip face up, and secure it to your board, so the cords are **vertical**.

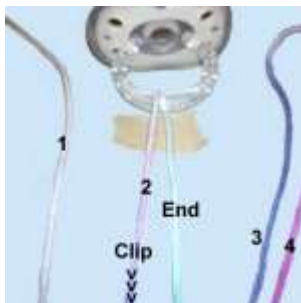


Pacifier Attachment



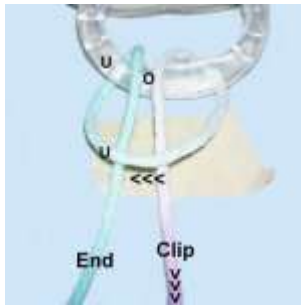
Mentally number the cords 1 - 4.

Measure from the clip to the distance you want the Pacifier Leash to be when it's finished. Mark the spot with tape. The handle of the pacifier will line up with the top edge.



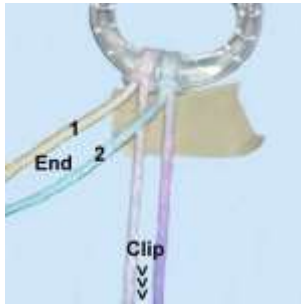
Step 6: Pass **cord 2 over - under** the handle, which should be resting at the spot you marked with tape.

Important: Make sure the end is to the **right** of the portion leading to the clip.

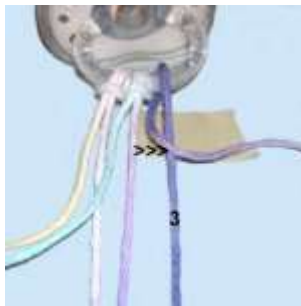


Step 7: Move the end to the **left**, crossing over the portion leading to the clip. This completes the first loop for the Larks Head knot.

Bring the cord **under - over** the handle. Pass it **under** the horizontal portion of the cord as you pull it straight down. **Adjust the position of the handle, and tighten both loops firmly.**



Step 8: Repeat steps 6 and 7 to attach cord 1 to the handle of the pacifier.



For cords 3 and 4, you repeat the same process, but in step 6, the end should rest to the **left** of the portion leading to the clip.

Cross it over to the **right** to create the head of the knot, and then complete the second loop.

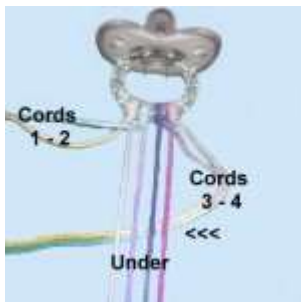


Bush Bar Technique

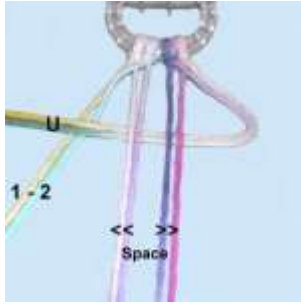
The cords leading to the clip are fillers, so secure the pacifier so they are taut. Placing pins behind the wide portion works well.

Combine cords 1 - 2 and 3 - 4 with tape. The Bush Bar design is shown below.

You can use a different type of knot in this area, if you want to change the design for the Pacifier Leash.

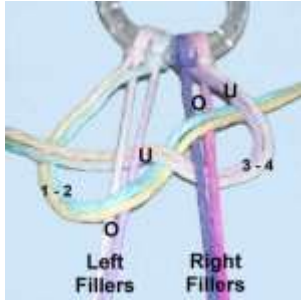


Step 9: Move cords 3 - 4 under the fillers, heading right to left.



Step 10: Move cords 1 - 2 under the portion of cords 3 - 4 on the left.

Spread the cords coming from the clip so there is space between them (sets of two).



Move cords 1 - 2 **over** the left set of fillers, and **under** the portion of cords 3 - 4 **between** the fillers.

Bring them **over** the right fillers, and **under** the portion of cords 3 - 4 on the right.

Pull on both sets of working cords to tighten the knot.

Step 11: Repeat steps 9 - 10 until the Pacifier Leash is the length you want. Make sure the knots are close to each other. Try to keep the fillers straight, and the knots tightened the same amount each time. That way the band for the Pacifier Leash will be neater.

Stop when you reach the clip. As you get close to it, you may need to remove the pins to tie the last few knots.

Make sure you have **at least 6 inches** of material left for the final steps.



Finishing Touches

To finish the 4 ends, you will go through the same process as you did to attach the pacifier (Larks Head knots).

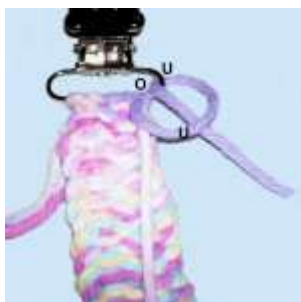
Position the clip in front of you, making sure it's face up. Use cords 3 and 4 first, and position the knots to the **right** of the ones already on the clip.



Step 12: Pass the end of cord 3 **over - under** the bar, and then **over** the cord as you pull it down.

The end should rest to the left of the part coming from the band.

You can also look at this as a counter-clockwise loop.



Pass the end of cord 3 **under - over** the bar, and then **under** the cord as you pull it down.

Step 13: Repeat step 12, attaching cord 4 to the right of cord 3.

Step 14: Attach cords 2 and 1 (in that order), but make sure the loops are made rotating **clockwise**.

Flip the design over and tie the ends together with tight Overhand knots, applying glue. When it's dry, you can cut off the excess material, or work each end through the back of the knots in that area.

Step 15: Clean the pacifier well before use. Discard the Pacifier Leash when it begins to fray. You can save the clip by simply cutting the strap off close to the bar.